

# Meharry Community Engagement Core October 2023 Newsletter

Published: Mon, 10/16/23

OCTOBER 2023



## MEHARRY COMMUNITY ENGAGEMENT CORE NEWSLETTER

Meharry Community Engagement Core connects community members and organizations with Meharry researchers to conduct research and share results that will improve health for communities that experience the poorest outcomes.

### INSIDE THIS ISSUE

Breast Cancer Awareness Month  
Stats and Facts  
Upcoming Community Events  
Researcher Spotlight

### Our Vision

To eradicate health and healthcare disparities through long-term collaborative, mutually beneficial community-research partnerships.

## BREAST CANCER AWARENESS

---

## Core Partnerships

Are you interested in participating in research studies at Meharry?

[\*\*Click here.\*\*](#)

Want to partner with the Community Engagement Core as a community member or a representative for a community based organization?

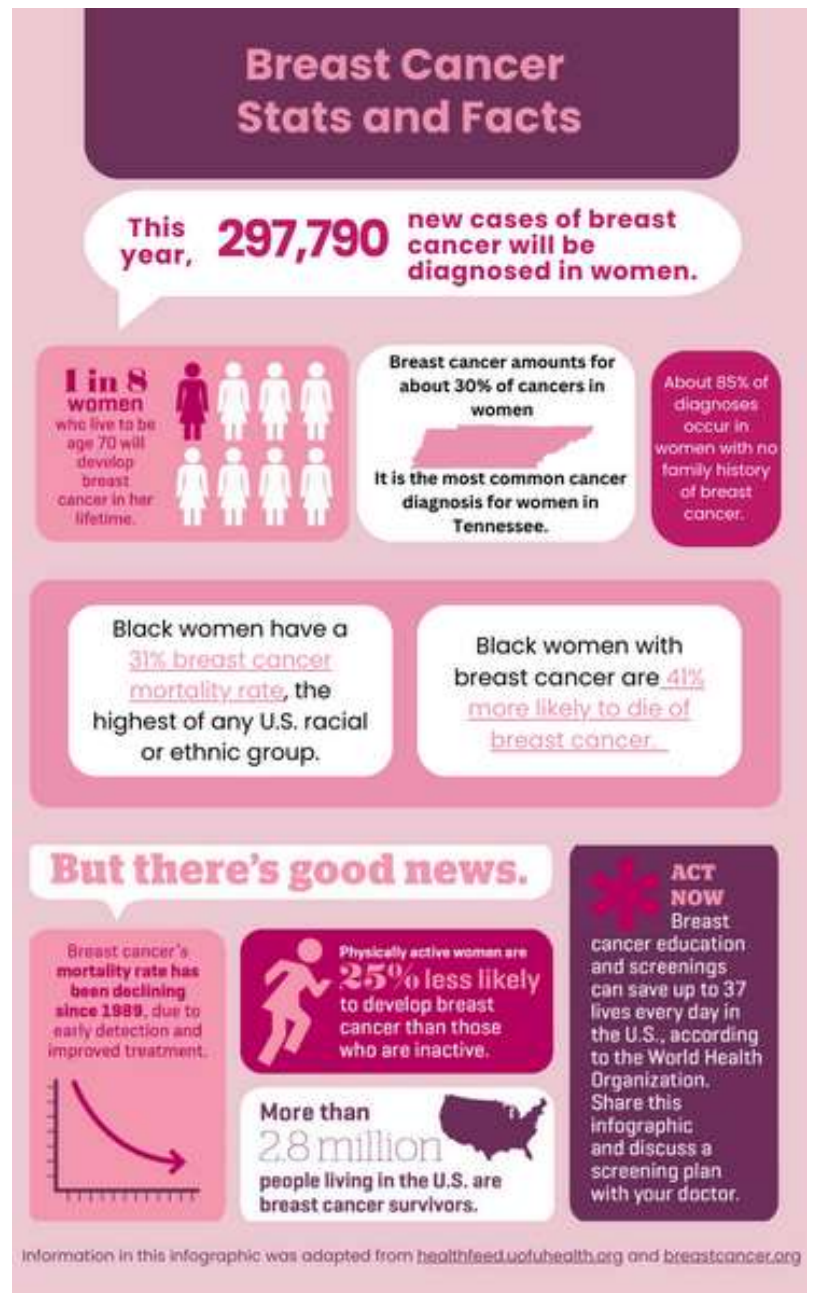
[\*\*Click here.\*\*](#)

---

## Call for Contributions

Do you want to be featured in our next issue? If so, email us for more details at [community@mmc.edu](mailto:community@mmc.edu).

---



CLICK TO ENLARGE

---

## National Breast Cancer Resources

[National Breast Cancer Foundation](#)

[Sisters Network Incorporated](#)

[Susan G. Komen](#)

[African American Breast Cancer Alliance](#)

## Tennessee Breast Cancer Resources

[Tennessee Breast Cancer Coalition](#)

[\\*Tennessee Breast and Cervical Screening Program](#)

\*Learn about **free** mammogram and Pap tests for women without insurance

---

October, 2023

# UPCOMING COMMUNITY EVENTS

## Tennessee Pink & Pearl Campaign

### Tennessee Pink & Pearl Campaign

#TNPINKANDPEARL

MADE IN PARTNERSHIP WITH THE TN COMPREHENSIVE CANCER CONTROL PROGRAM, TN BREAST AND CERVICAL SCREENING PROGRAM, TN CANCER REGISTRY, AND TN TOBACCO USE PREVENTION AND CONTROL PROGRAM



**Pink is the ribbon color for Breast Cancer Awareness**

**Breast Cancer is the most common type of cancer in female Tennesseans**

**Every day in Tennessee 14 people are diagnosed with Breast Cancer**



**Pearl is the ribbon color for Lung Cancer Awareness**

**Lung Cancer is the 2nd most common type of cancer in female Tennesseans**

**Every day in Tennessee 17 people are diagnosed with Lung Cancer**

[LEARN MORE](#)

# Metro Parks 3rd Annual Stop The Bullying Walk

**METRO PARKS**  
**WE STAND UP AGAINST BULLYING**

**3rd Annual**  
**STOP THE BULLYING WALK**

LIVE PERFORMANCES,  
GAMES, FOOD AND FUN

**SATURDAY, OCTOBER 21, 2023**  
**10:00AM-1:00PM**  
**HADLEY PARK**  
**1037 28TH AVE. NORTH**

**FOR MORE INFORMATION :**  
**CONTACT Elona at 615-862-8902**

# TSU Tiger Fresh Farmers Market



TENNESSEE  
STATE UNIVERSITY

Department of Human Sciences'

## Tiger Fresh Farmers Market



Come check out local Tennessee fresh  
produce, crafts and food demos on  
Thursdays this fall.

Open  
11 AM - 3 PM

September 28, 2023  
October 12, 2023  
October 26, 2023  
November 9, 2023

Humphries Parking Lot  
3500 John A. Merritt Blvd

For more information, contact Dr. Veronica J. Oates  
[voates@tnstate.edu](mailto:voates@tnstate.edu)

TSU-24-047(A)-7g-13515 - Tennessee State University is an  
AA/EEO employer.

**CONTACT:** Dr. Veronica Oates at [voates@tnstate.edu](mailto:voates@tnstate.edu)

# Diabetic Social's 3rd Annual Health and Wellness Fair



**Diabetic Social**  
3rd Annual  
**Health & Wellness Fair 2023**

Come get your free:  
**Screenings, Food  
&  
Education**

**When:**  
November 4, 2023  
11 am-3 pm

**Where:**  
TriStar Medical Plaza (The Crossings)  
5380 Hickory Hollow Pkwy, Ste. 200  
Antioch, TN 37013

For More Information:  
[www.DiabeticSocial.org](http://www.DiabeticSocial.org)



Join Diabetic Social on **Saturday, November 4th** for the **3rd Annual Health and Wellness Fair**, focused on well-being and healthy living.

You don't want to miss...

- FREE Screenings
- FREE Food
- FREE Education

[LEARN MORE](#)

October, 2023

# RESEARCHER SPOTLIGHT



## Josiah Ochieng, PhD

Professor of Biochemistry and Cancer Biology for the School of Medicine at Meharry Medical College. His research focus is molecular determinants of cancer metastasis. See a summary of the research he is currently working on below.

**Title:** Identifying new factors that contribute to the growth and spread of prostate cancer

### What's the Problem?

- Prostate cancer is the most common cancer among men, after skin cancer.
- African American men have significantly higher rates of prostate cancer compared to any other racial and ethnic group.
- Identifying new factors that can contribute to the growth and spread will lead to more effective treatments for men who suffer from prostate cancer.

[READ MORE](#)

MEHARRY COMMUNITY ENGAGEMENT CORE

[Click unsubscribe to stop receiving emails]


<https://meharryresearchconnect.org/>

Community@mmc.edu

615.327.5807

1005 Dr DB Todd Jr Blvd  
Nashville TN 37208  
USA

[Unsubscribe](#) | [Change Subscriber Options](#)

Build your audience with  **AWeber**

powered by  **AWeber**